

## Lightweight Stage Rental P2 1R1PG1B Conference Led Display

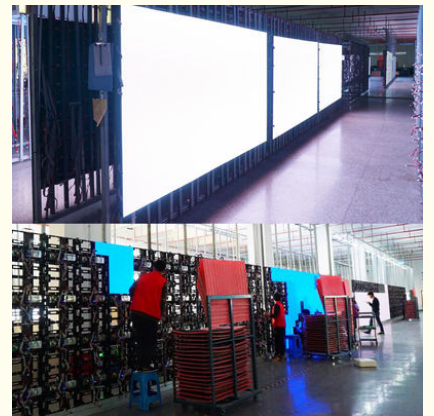
### Basic Information

- Place of Origin: China
- Brand Name: Vegoo
- Certification: CE
- Model Number: VG-P2-dh2
- Minimum Order Quantity: 1sqm
- Packaging Details: Plywood case / Flight case / Carton box
- Delivery Time: 10-20 days
- Payment Terms: T/T
- Supply Ability: 5000 Sqm/month

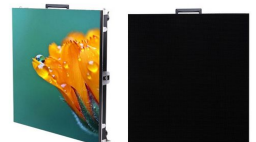
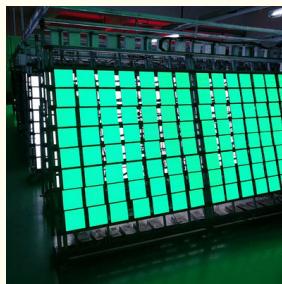
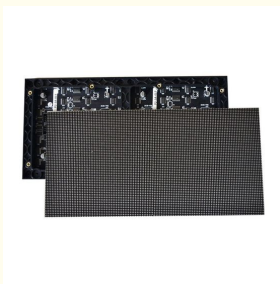


### Product Specification

- Application: Indoor
- Color: Full Colour
- Pixel Pitch: 2mm
- Panel Size: 256mm X 128mm
- Highlight: **1R1PG1B conference led screen, P2 Conference Led Display, 1R1PG1B Conference Led Display**



### More Images



Our Product Introduction

for more products please visit us on [hdled-display.com](http://hdled-display.com)

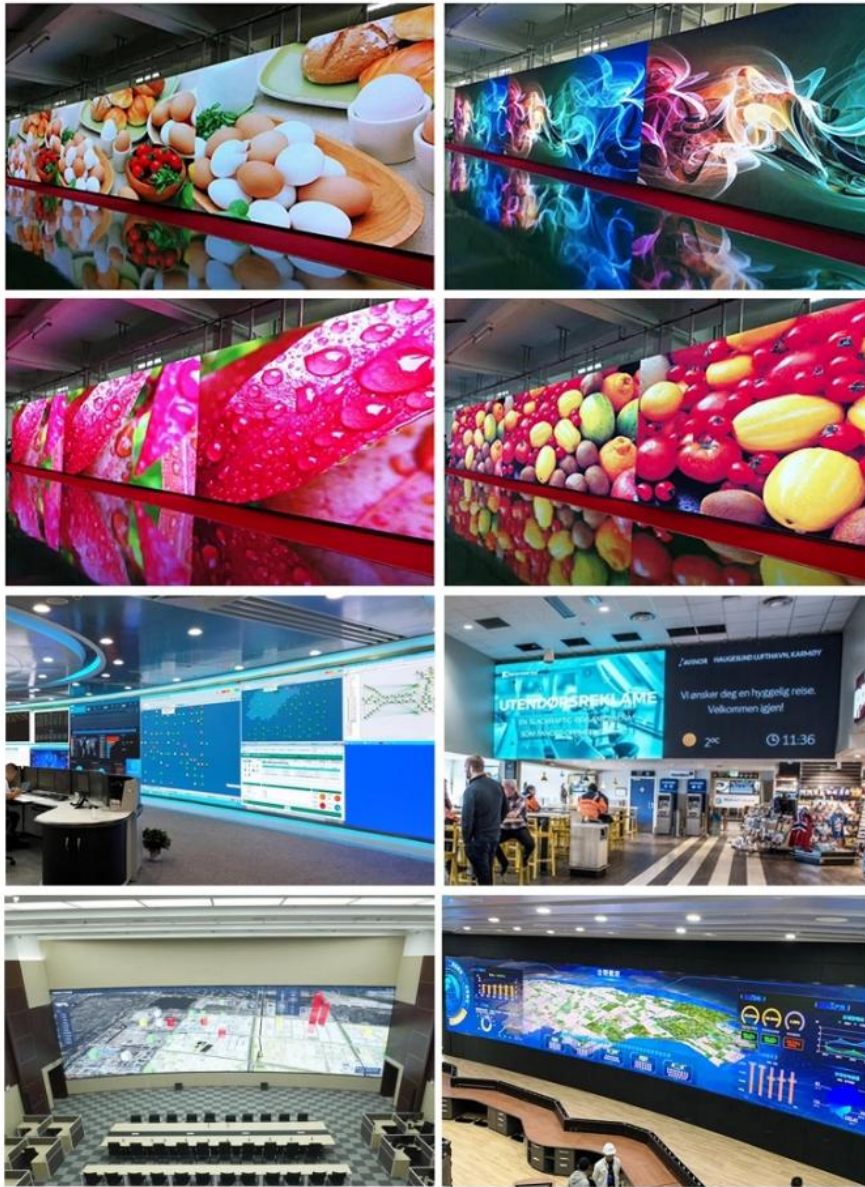
## Product Description

### Indoor high-definition LED display p2 led module conference led display stage rental large screen

#### Product Feature:

1, Seamless splicing 2, High brightness intelligent adjustable 3, High gray level better color performance 4, High contrast faster response speed high refresh frequency 5, Color reduction and naturalization

Unit Module Specifications						
Item	P1.25	P1.56	P1.667	P1.875	P1.923	P2
Pixel Pitch	1.25 mm	1.56 mm	1.667 mm	1.875 mm	1.923 mm	2 mm
Pixel Configuration	3in1 (1R1PG1B)					
Module Size(MM)	200*150	200*150	200*150	240*120	200*150	256*128
Module Resolution(Dots)	160*120	128*96	120*90	128*64	104*78	128*64
Module Weight(Kg)	0.3	0.3	0.3	0.31	0.3	0.3
Package LED Mode	1010	1010	1010	1515	1515	1515
Max Power(Watt)	22	21	20.5	19	17.5	17.5
Pixel Density(Dots/SQM)	691*200	409*600	360*000	284*444	270*400	250*000
Driving Method	Constant Current Driving					
Scan Method(Scan)	1/30	1/32	1/30	1/32	1/26	1/32
Interface Way	HUB 75					
Brightness(CD/SQM)	≥ 1200					
Unit Cabinet Specifications						
Cabinet Size(MM)	400*300	400*300	400*300	480*480	400*300	512*512
Cabinet Composing(PCS)	4	4	4	8	4	8
Power Supply Mode(Per Cabinet)	5V60A	5V60A	5V60A	5V60A	5V60A	5V60A
Cabinet Resolution(Dots)	320*240	256*192	240*180	256*256	208*156	256*256
Optimal Viewing Distance(M)	1-100	1.5-150	1.6-160	1.8-180	1.92-200	1.92-200
Optimal Viewing Angle	Horizontal angle: 160 degree; Vertical angle: 120 degree					
Environment Temperature	Storage: -40 degree ~ +85 degree; Work: -20 degree ~ +60 degree					
Relative Humidity	10% ~ 95%					
Power Supply Specifications						
Operating Voltage	AC:100V~120V AC:220~240V					
Average Power(W/SQM)	150-400	150-380	150-360	150-350	150-320	150-330
Max Power Consumption(W/SQM)	≤ 1150	≤ 1050	≤ 1000	≤ 950	≤ 920	≤ 900
Current	≤ 20mA (single LED)					
Control System Specifications						
Computer	Pentium4 or above P4 or above					
Operate System	Win7-11/2000/NT/XP					
Control Mode	Synchronization with PC					
Main Technical Parameter Specifications						
Driving Device	Constant Current Driving					
Refresh Rate	≥ 1900-3840Hz					
Gray/Color	RGB each 256 grade, can display 16.7color					
Lifespan	≥ 100000hours					



## FAQ

- 1. How can i place an order?** Please provide the details of your requirements as clear as possible. So we can send you the offer at the first time. For designing or further discussion, it is better to contact us with WhatsApp/email /phone, in case of any delays.
- 2. What kind of display do we provide?** We have indoor/outdoor/mobile LED /rental LED display /LED stage/ LED module/Advertising LED display for you choose.
- 3. What about the lead time for an order?** Always: 10-17 days, as your order quantity, sometimes we have stock, can delivery within 7 days
- 4. What about the warranty?** We have Three years quality guaranteed, spare parts such as led module, receiving card, control card, power supply are damaged not cause of artificial damaged, then it's free maintenance and ship back new ones for replacement.
- 5. How about the quality?** Our led products must be testing of at least 72hours before shipping, from purchase raw materials to ship ,Each step has strict quality control systems to ensure led display with good quality

**Vegoo** 威固电子 **Shenzhen Weigu Electronic Technology Co., Ltd.**

☎ 86-15118043086    ✉ Linda@vegooled.com    🌐 hdled-display.com

806 Building 1 Geya Technology Building, Clock Base, Ma Tou community, Ma Tian Street, Guangming District, Shenzhen, China